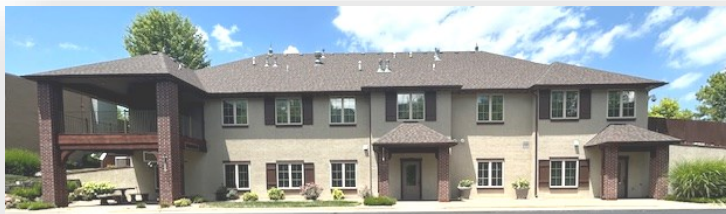




www.billbeall.com



2,651 SF CLASS “A” OFFICE SPACE - FOR LEASE

10,606 SF OFFICE BUILDING - FOR SALE

1546 E. Bradford Parkway, Springfield, MO 65804



FOR LEASE

- 2,651– Class “A” Office Space
- Stunning Turnkey Space
- Lower Level
- SpringNet in Building
- Located east of Freemont South of Primrose
- Lease Term: 3-5 Years
- Lease Rate= \$12.50/SF
- NNN Lease= \$4.75/SF
- Monthly Payment= \$3,811.00

10,606 SF Building Available FOR SALE: \$2,300,000.00



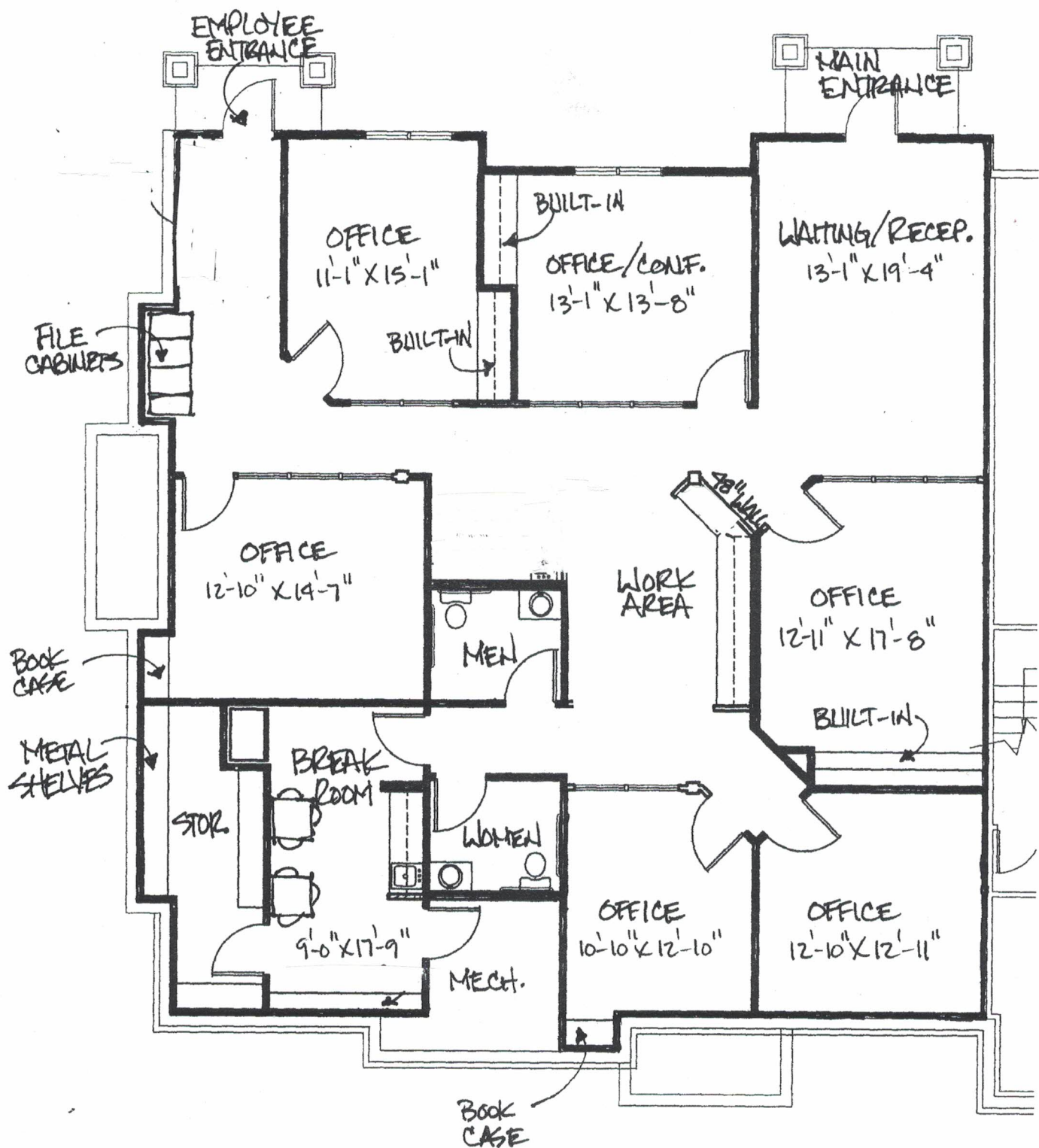
2921 S. National Ave., Springfield, MO 65804

(417) 887-5535 email: beall@billbeall.com

1546 E. Bradford Pkwy. L108-112
Springfield, MO 65804

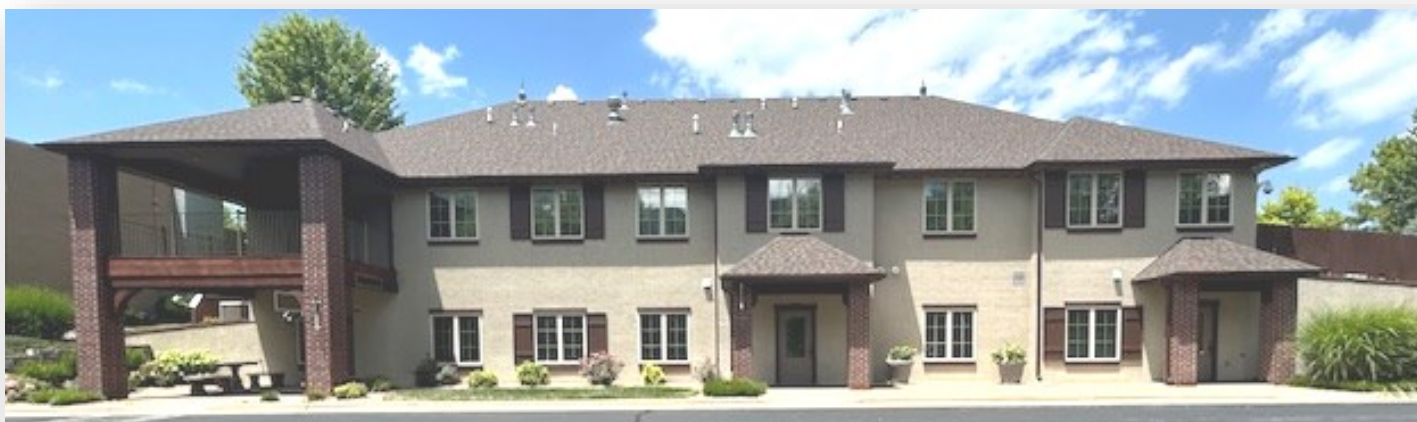


2921 S. National Ave., Springfield, MO 65804
(417) 887-5535 email: beall@billbeall.com



Suite L-108-112

1546 E. Bradford Pkwy.
Springfield, MO 65804



2921 S. National Ave., Springfield, MO 65804
(417) 887-5535 email: beall@billbeall.com

Business Summary

Bradford Suites
1546 E Bradford Pkwy, Springfield, Missouri, 65804
Rings: 1, 3, 5 mile radii

Prepared by Esri
Latitude: 37.14529
Longitude: -93.26812

Data for all businesses in area		1 mile		3 miles		5 miles						
Total Businesses:		1,434		5,374		8,967						
Total Employees:		31,453		103,096		153,915						
Total Population:		6,285		66,082		156,314						
Employee/Population Ratio (per 100 Residents)		500		156		98						
by NAICS Codes	Businesses		Employees		Businesses		Employees		Businesses		Employees	
	Number	Percent	Number	Percent	Number	Percent	Number	Percent	Number	Percent	Number	Percent
Agriculture, Forestry, Fishing & Hunting	1	0.1%	4	0.0%	10	0.2%	39	0.0%	21	0.2%	223	0.1%
Mining	0	0.0%	0	0.0%	3	0.1%	38	0.0%	7	0.1%	112	0.1%
Utilities	0	0.0%	0	0.0%	2	0.0%	25	0.0%	5	0.1%	271	0.2%
Construction	41	2.9%	381	1.2%	198	3.7%	1,487	1.4%	477	5.3%	3,821	2.5%
Building Construction	18	1.3%	96	0.3%	76	1.4%	516	0.5%	171	1.9%	1,124	0.7%
Heavy/Civil Eng Construction	8	0.6%	186	0.6%	17	0.3%	227	0.2%	24	0.3%	296	0.2%
Specialty Trade Contractor	15	1.1%	100	0.3%	105	1.9%	744	0.7%	282	3.1%	2,401	1.6%
Manufacturing	18	1.3%	522	1.7%	82	1.5%	1,067	1.0%	244	2.7%	6,333	4.1%
Wholesale Trade	15	1.1%	155	0.5%	84	1.6%	581	0.6%	264	2.9%	5,448	3.5%
Durable Goods	13	0.9%	146	0.5%	68	1.3%	471	0.5%	206	2.3%	3,884	2.5%
Nondurable Goods	2	0.1%	8	0.0%	11	0.2%	90	0.1%	51	0.6%	1,239	0.8%
Trade Broker	0	0.0%	1	0.0%	5	0.1%	20	0.0%	7	0.1%	325	0.2%
Retail Trade	168	11.7%	3,219	10.2%	708	13.2%	13,340	12.9%	1,163	13.0%	18,927	12.3%
Motor Vehicle & Parts Dealers	9	0.6%	344	1.1%	60	1.1%	1,713	1.7%	144	1.6%	3,989	2.6%
Furniture & Home Furnishings Stores	16	1.1%	186	0.6%	43	0.8%	323	0.3%	63	0.7%	410	0.3%
Electronics & Appliance Stores	7	0.5%	66	0.2%	27	0.5%	190	0.2%	49	0.6%	355	0.2%
Building Material & Garden Equipment & Supplies Dealers	6	0.4%	384	1.2%	37	0.7%	585	0.6%	80	0.9%	1,007	0.7%
Food & Beverage Stores	16	1.1%	359	1.1%	68	1.3%	1,673	1.6%	112	1.3%	2,371	1.5%
Health & Personal Care Stores	32	2.2%	257	0.8%	98	1.8%	1,258	1.2%	134	1.5%	1,614	1.1%
Gasoline Stations & Fuel Dealers	1	0.1%	4	0.0%	10	0.2%	47	0.1%	27	0.3%	131	0.1%
Clothing, Clothing Accessories, Shoe and Jewelry Stores	22	1.5%	171	0.5%	131	2.4%	1,321	1.3%	159	1.8%	1,592	1.0%
Sporting Goods, Hobby, Book, & Music Stores	38	2.6%	510	1.6%	147	2.7%	3,470	3.4%	249	2.8%	4,301	2.8%
General Merchandise Stores	21	1.5%	938	3.0%	88	1.6%	2,759	2.7%	146	1.6%	3,156	2.0%
Transportation & Warehousing	11	0.8%	64	0.2%	37	0.7%	429	0.4%	88	1.0%	1,587	1.0%
Truck Transportation	6	0.4%	24	0.1%	15	0.3%	71	0.1%	30	0.3%	220	0.1%
Information	15	1.1%	131	0.4%	86	1.6%	994	1.0%	204	2.3%	3,807	2.5%
Finance & Insurance	145	10.1%	1,292	4.1%	477	8.9%	3,675	3.6%	628	7.0%	4,602	3.0%
Central Bank/Credit Intermediation & Related Activities	35	2.4%	457	1.4%	134	2.5%	1,670	1.6%	196	2.2%	2,123	1.4%
Securities & Commodity Contracts	48	3.4%	291	0.9%	129	2.4%	718	0.7%	166	1.9%	921	0.6%
Funds, Trusts & Other Financial Vehicles	62	4.3%	543	1.7%	214	4.0%	1,286	1.3%	266	3.0%	1,558	1.0%
Real Estate, Rental & Leasing	115	8.0%	1,983	6.3%	360	6.7%	3,339	3.2%	589	6.6%	4,441	2.9%
Professional, Scientific & Tech Services	159	11.1%	1,530	4.9%	608	11.3%	4,565	4.4%	1,012	11.3%	7,428	4.8%
Legal Services	56	3.9%	542	1.7%	167	3.1%	1,285	1.3%	250	2.8%	1,748	1.1%
Management of Companies & Enterprises	4	0.3%	70	0.2%	8	0.1%	472	0.5%	13	0.1%	493	0.3%
Administrative, Support & Waste Management Services	36	2.5%	489	1.6%	156	2.9%	1,469	1.4%	329	3.7%	3,576	2.3%
Educational Services	21	1.5%	403	1.3%	91	1.7%	1,942	1.9%	192	2.1%	8,387	5.5%

Source: Copyright 2024 Data Axle, Inc. All rights reserved. Esri Total Population forecasts for 2024.

Date Note: Data on the Business Summary report is calculated using **Esri's Data allocation method** which uses census block groups to allocate business summary data to custom areas.

January 06, 2025

Business Summary

Bradford Suites
1546 E Bradford Pkwy, Springfield, Missouri, 65804
Rings: 1, 3, 5 mile radii

Prepared by Esri
Latitude: 37.14529
Longitude: -93.26812

by NAICS Codes	Businesses		Employees		Businesses		Employees		Businesses		Employees	
	Number	Percent	Number	Percent	Number	Percent	Number	Percent	Number	Percent	Number	Percent
Health Care & Social Assistance	340	23.7%	17,809	56.6%	1,118	20.8%	55,937	54.3%	1,355	15.1%	61,378	39.9%
Amulatory Health Care	277	19.3%	6,074	19.3%	910	16.9%	22,906	22.2%	1,042	11.6%	24,853	16.1%
Hospital	14	1.0%	10,609	33.7%	40	0.7%	29,663	28.8%	55	0.6%	31,336	20.4%
Nursing/Residential Care	15	1.1%	318	1.0%	44	0.8%	1,367	1.3%	61	0.7%	1,950	1.3%
Social Assistance	34	2.4%	809	2.6%	124	2.3%	2,000	1.9%	198	2.2%	3,238	2.1%
Arts, Entertainment & Recreation	23	1.6%	234	0.7%	90	1.7%	1,183	1.1%	173	1.9%	1,966	1.3%
Accommodation & Food Services	112	7.8%	2,165	6.9%	432	8.0%	8,134	7.9%	702	7.8%	11,763	7.6%
Accommodation	11	0.8%	142	0.5%	36	0.7%	620	0.6%	68	0.8%	1,142	0.7%
Food Services & Drinking Places	101	7.0%	2,023	6.4%	396	7.4%	7,514	7.3%	634	7.1%	10,620	6.9%
Other Services (except Public Administration)	181	12.6%	922	2.9%	712	13.3%	3,955	3.8%	1,237	13.8%	7,451	4.8%
Repair & Maintenance	19	1.3%	151	0.5%	88	1.6%	608	0.6%	202	2.3%	1,389	0.9%
Automotive Repair & Maintenance	8	0.6%	105	0.3%	52	1.0%	454	0.4%	136	1.5%	1,102	0.7%
Personal & Laundry Service	111	7.7%	527	1.7%	382	7.1%	1,884	1.8%	519	5.8%	2,582	1.7%
Civic and Other Orgs	51	3.6%	244	0.8%	242	4.5%	1,463	1.4%	516	5.8%	3,480	2.3%
Public Administration	6	0.4%	73	0.2%	25	0.5%	403	0.4%	103	1.1%	1,842	1.2%
Unclassified Establishments	23	1.6%	6	0.0%	88	1.6%	22	0.0%	162	1.8%	59	0.0%
Total	1,434	100.0%	31,453	100.0%	5,374	100.0%	103,096	100.0%	8,967	100.0%	153,915	100.0%

Source: Copyright 2024 Data Axle, Inc. All rights reserved. Esri Total Population forecasts for 2024.

Date Note: Data on the Business Summary report is calculated using **Esri's Data allocation method** which uses census block groups to allocate business summary data to custom areas.

January 06, 2025

Business Summary

Bradford Suites
1546 E Bradford Pkwy, Springfield, Missouri, 65804
Rings: 1, 3, 5 mile radii

Prepared by Esri
Latitude: 37.14529
Longitude: -93.26812

by SIC Codes	Businesses		Employees		Businesses		Employees		Businesses		Employees	
	Number	Percent	Number	Percent	Number	Percent	Number	Percent	Number	Percent	Number	Percent
Agriculture & Mining	10	0.7%	51	0.2%	74	1.4%	486	0.5%	154	1.7%	1,121	0.7%
Construction	31	2.2%	334	1.1%	169	3.1%	1,311	1.3%	427	4.8%	3,442	2.2%
Manufacturing	15	1.1%	466	1.5%	63	1.2%	902	0.9%	212	2.4%	6,229	4.0%
Transportation	19	1.3%	232	0.7%	73	1.4%	836	0.8%	156	1.7%	2,127	1.4%
Communication	8	0.6%	58	0.2%	43	0.8%	375	0.4%	98	1.1%	2,225	1.4%
Utility	0	0.0%	0	0.0%	6	0.1%	59	0.1%	20	0.2%	422	0.3%
Wholesale Trade	15	1.1%	155	0.5%	85	1.6%	584	0.6%	265	3.0%	5,455	3.5%
Retail Trade Summary	272	19.0%	5,276	16.8%	1,127	21.0%	21,045	20.4%	1,841	20.5%	29,903	19.4%
Home Improvement	6	0.4%	384	1.2%	37	0.7%	585	0.6%	81	0.9%	1,020	0.7%
General Merchandise Stores	16	1.1%	906	2.9%	56	1.0%	2,626	2.5%	91	1.0%	2,918	1.9%
Food Stores	23	1.6%	439	1.4%	102	1.9%	2,063	2.0%	161	1.8%	2,817	1.8%
Auto Dealers & Gas Stations	10	0.7%	348	1.1%	67	1.3%	1,749	1.7%	168	1.9%	4,109	2.7%
Apparel & Accessory Stores	19	1.3%	165	0.5%	107	2.0%	1,199	1.2%	130	1.4%	1,455	0.9%
Furniture & Home Furnishings	26	1.8%	296	0.9%	70	1.3%	544	0.5%	118	1.3%	849	0.6%
Eating & Drinking Places	98	6.8%	1,978	6.3%	380	7.1%	7,291	7.1%	609	6.8%	10,351	6.7%
Miscellaneous Retail	73	5.1%	761	2.4%	307	5.7%	4,988	4.8%	483	5.4%	6,386	4.2%
Finance, Insurance, Real Estate Summary	273	19.0%	3,437	10.9%	841	15.7%	7,561	7.3%	1,192	13.3%	9,445	6.1%
Banks, Savings & Lending Institutions	37	2.6%	471	1.5%	137	2.5%	1,705	1.6%	197	2.2%	2,155	1.4%
Securities Brokers	43	3.0%	262	0.8%	122	2.3%	660	0.6%	158	1.8%	860	0.6%
Insurance Carriers & Agents	62	4.3%	543	1.7%	213	4.0%	1,284	1.3%	265	3.0%	1,556	1.0%
Real Estate, Holding, Other Investment Offices	130	9.1%	2,160	6.9%	369	6.9%	3,913	3.8%	572	6.4%	4,873	3.2%
Services Summary	762	53.1%	21,365	67.9%	2,781	51.8%	69,515	67.4%	4,339	48.4%	91,669	59.6%
Hotels & Lodging	11	0.8%	142	0.5%	36	0.7%	620	0.6%	68	0.8%	1,142	0.7%
Automotive Services	11	0.8%	113	0.4%	62	1.1%	527	0.5%	163	1.8%	1,234	0.8%
Movies & Amusements	27	1.9%	273	0.9%	113	2.1%	1,228	1.2%	214	2.4%	2,111	1.4%
Health Services	300	20.9%	16,894	53.7%	981	18.3%	53,566	52.0%	1,131	12.6%	57,533	37.4%
Legal Services	47	3.3%	456	1.4%	148	2.8%	1,116	1.1%	228	2.5%	1,570	1.0%
Education Institutions & Libraries	16	1.1%	361	1.1%	69	1.3%	2,042	2.0%	160	1.8%	8,627	5.6%
Other Services	351	24.5%	3,125	9.9%	1,370	25.5%	10,417	10.1%	2,374	26.5%	19,452	12.6%
Government	6	0.4%	73	0.2%	24	0.5%	399	0.4%	100	1.1%	1,816	1.2%
Unclassified Establishments	23	1.6%	6	0.2%	88	1.6%	22	0.4%	162	1.8%	59	1.2%
Totals	1,434	100.0%	31,453	100.0%	5,374	100.0%	103,096	100.0%	8,967	100.0%	153,915	100.0%

Source: Copyright 2024 Data Axle, Inc. All rights reserved. Esri Total Population forecasts for 2024.

Date Note: Data on the Business Summary report is calculated using **Esri's Data allocation method** which uses census block groups to allocate business summary data to custom areas.

January 06, 2025



Disclaimer:

The information provided in this document is deemed reliable but not guaranteed and is subject to change without notice. Bill Beall Co. reserves the right to adjust prices, availability, or remove products or services from the market at its discretion. All transactions are contingent upon the execution of definitive agreements, and Bill Beall Co. makes no guarantees regarding the accuracy or completeness of the information.

This document is for informational purposes only and is not an offer to sell, purchase, or engage in any transaction. Bill Beall Co. disclaims any liability for the information provided and encourages recipients to conduct their own independent due diligence. Any estimates or assumptions may not be accurate, and Bill Beall Co. makes no representation regarding future outcomes. Photos are the property of their respective owners, and unauthorized use is prohibited.

Bill Beall Co. reserves the right to reject any offers or terminate discussions at its sole discretion. No legal obligation exists until a final, fully executed agreement is signed. By submitting an offer, the prospective party agrees to release Bill Beall Co. from any liability. Legal, tax, and title matters should be addressed with appropriate professionals.



2921 S. National Ave., Springfield, MO 65804

(417) 887-5535 email: beall@billbeall.com